



## Near Miss – HiPo DROPPED OBJECT

<b>Number</b>	2022-02	<b>Date</b>	11.02.2022
---------------	---------	-------------	------------

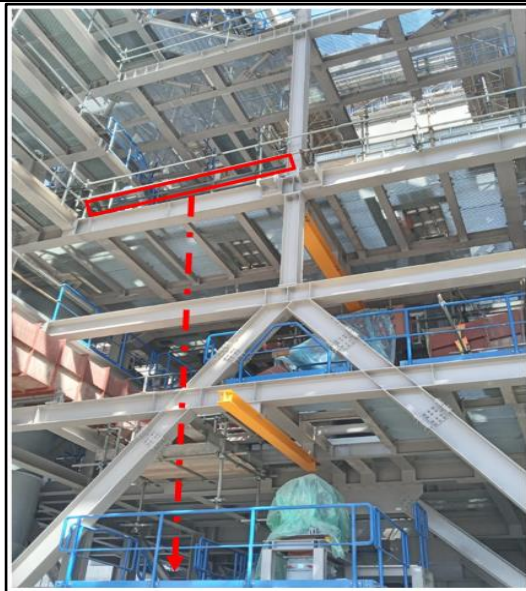
### Summary:

On Friday, 11.02.2022, a mason crew for the HZI Consortium partner were involved in concrete grouting of the structural beam at the BS03 ground level (ground floor of Line 12) when at around 10:30am, a 5m long cuplock scaffolding metal toe board weighing approximately 18 kg became loose and fell from 11m elevation and landed on the ground approximately 1m near the mason crew who were involved in the concrete grouting work activity.

### Outcomes:

There were no injuries reported, only minor property damage occurred on the scaffold metal toe board.

### Incident Classification: Level 3 HiPo Near Miss



Scaffold toe board fell 11m to the ground



Scaffold metal toe board landed at this position next to the mason crew

### Root Causes and Contributory Factors

- The two standards provided (punching) for the scaffold metal toe board did not have adequate length as per the accepted scaffolding requirement. The standards did not extend to the grating platform in order to add firm support to the toe boards.
- A wooden dunnage used for the storage of a boiler pipe spool was kept very close (about 10mm) to the scaffold metal toe board in such a manner that it may induce constant pressure on the fittings of the toe board.
- The scaffold metal toe board was secured only with 1 clamp instead of the required 3 clamps.
- There was no inspection system in place in order to confirm the integrity of provided temporary edge protections (toe boards).

### Lesson Learned

- Where the length of the toe board is >2.5m, 3 clamps should be used
- The standards (punching) of the toe board should be extended to the grating platform level to add firm support to the toe boards.
- When placing dunnage or supports, it must be kept away from any edge protection (toe board).
- Only trained and competent scaffolders can make erection, dismantling or alteration of any scaffold structure.
- Implement a regular (weekly) inspection system – similar to the traditional scaffolding inspection process to check and confirm the strength and integrity of temporary edge protections (toe board).



Every Lesson Learned is an opportunity to avoid recurrences.  
What have you done to avoid a similar incident on your project?

